



Test Report

No. SHAML1213055001

Date: 02 Aug 2012

Page 1 of 4

Beisit Electric (Hangzhou) Co.Ltd

1 Tangmei Rd , Yuhang Economic Development Zone,Huangzhou,Zhejiang 311100,China

The following sample(s) was/were submitted and identified on behalf of the clients as : Terminals

SGS Job No. : SC120703632 - SH
Material and Mark : PVC,RED COPPER,TIN
Product Specification : SV、SNB、RV、RNB、E、EN、TE、FDD、MDD、FDFD、FBDD、DBV、DB
N、BV、BN、MPD、FRD、PTV、LSV、HV、FSV、LBV
Date of Sample Received : 27 Jul 2012
Testing Period : 27 Jul 2012 - 02 Aug 2012
Test Requested : Selected test(s) as requested by client.
Test Method : Please refer to next page(s).
Test Results : Please refer to next page(s).

Signed for and on behalf of
SGS-CSTC Ltd.

Fan Jingjie, JJ
Approved Signatory

This document is issued by the Company subject to its General Conditions of Service printed overleaf, available on request or accessible at http://www.sgs.com/terms_and_conditions.htm and, for electronic format documents, subject to Terms and Conditions for Electronic Documents at www.sgs.com/terms_e-document.htm. Attention is drawn to the limitation of liability, indemnification and jurisdiction issues defined therein. Any holder of this document is advised that information contained hereon reflects the Company's findings at the time of its intervention only and within the limits of Client's instructions, if any. The Company's sole responsibility is to its Client and this document does not exonerate parties to a transaction from exercising all their rights and obligations under the transaction documents. This document cannot be reproduced except in full, without prior written approval of the Company. Any unauthorized alteration, forgery or falsification of the content or appearance of this document is unlawful and offenders may be prosecuted to the fullest extent of the law. Unless otherwise stated the results shown in this test report refer only to the sample(s) tested and such sample(s) are retained for 30 days only.

SGS-CSTC Standards Technical Services (Shanghai) Co., Ltd.
Testing Center-Materials Laboratory

No.69, Block 1159, East Kang Qiao Road, Pudong District, Shanghai, China 201319 t (86-21) 61196300 f (86-21) 68183122/68183920 www.cn.sgs.com
中国·上海·浦东康桥东路1159弄69号 邮编: 201319 t (86-21) 61196300 f (86-21) 68183122/68183920 e sgs.china@sgs.com

SHML 354601

Member of the SGS Group (SGS SA)

Attention: To check the authenticity of testing /inspection report & certificate, please contact us at telephone: (86-755)83071443, or email: CN.Doccheck@sgs.com

Test Report

No. SHAML1213055001

Date: 02 Aug 2012

Page 2 of 4

Test Results :

Test Part Description :

Specimen No.	SGS Sample ID	Description
1	SHA12-130550.001	silver metal part

Remarks :

- (1) 1 mg/kg = 1 ppm = 0.0001%
- (2) MDL = Method Detection Limit
- (3) ND = Not Detected (< MDL)
- (4) "-" = Not Regulated

RoHS Directive 2011/65/EU

Test Method : With reference to IEC 62321:2008

- (1) Determination of Cadmium by ICP-OES.
- (2) Determination of Lead by ICP-OES.
- (3) Determination of Mercury by ICP-OES.
- (4) Determination of Hexavalent Chromium by Spot test / Colorimetric Method using UV-Vis.

Test Item(s)	Limit	Unit	MDL	001
Cadmium (Cd)	100	mg/kg	2	ND
Lead (Pb)	1000	mg/kg	2	40
Mercury (Hg)	1000	mg/kg	2	ND
Hexavalent Chromium (Cr(VI))	-	-	◇	Negative

Notes :

- (1) The maximum permissible limit is quoted from directive 2011/65/EU, Annex II
- (2) ◇Spot-test:
 Negative = Absence of Cr(VI) coating, Positive = Presence of Cr(VI) coating;
 (The tested sample should be further verified by boiling-water-extraction method if the spot test result is Negative or cannot be confirmed.)
 ◇Boiling-water-extraction:
 Negative = Absence of Cr(VI) coating
 Positive = Presence of Cr(VI) coating; the detected concentration in boiling-water-extraction solution is equal or greater than 0.02 mg/kg with 50 cm² sample surface area.
 For corrosion protection coatings on metals: Information on storage conditions and production date of the tested sample is unavailable and thus results of Cr(VI) represent status of the sample at the time of testing.

This document is issued by the Company subject to its General Conditions of Service printed overleaf, available on request or accessible at http://www.sgs.com/terms_and_conditions.htm and, for electronic format documents, subject to Terms and Conditions for Electronic Documents at www.sgs.com/terms_e-document.htm. Attention is drawn to the limitation of liability, indemnification and jurisdiction issues defined therein. Any holder of this document is advised that information contained hereon reflects the Company's findings at the time of its inspection only and within the limits of Client's instructions, if any. The Company's sole responsibility is to its Client and this document does not exonerate parties to a transaction from exercising all their rights and obligations under the transaction documents. This document cannot be reproduced except in full, without prior written approval of the Company. Any unauthorized alteration, forgery or falsification of the content or appearance of this document is unlawful and offenders may be prosecuted to the fullest extent of the law. Unless otherwise stated, the results shown in this test report refer only to the sample(s) tested and such sample(s) are retained for 30 days only.



No.69, Block 1159, East Kang Qiao Road, Pudong District, Shanghai, China 201319 t(86-21) 61196300 f(86-21) 68183122/68183920 www.cn.sgs.com
 中国·上海·浦东康桥东路1159弄69号 邮编: 201319 t(86-21) 61196300 f(86-21) 68183122/68183920 e sgs.china@sgs.com

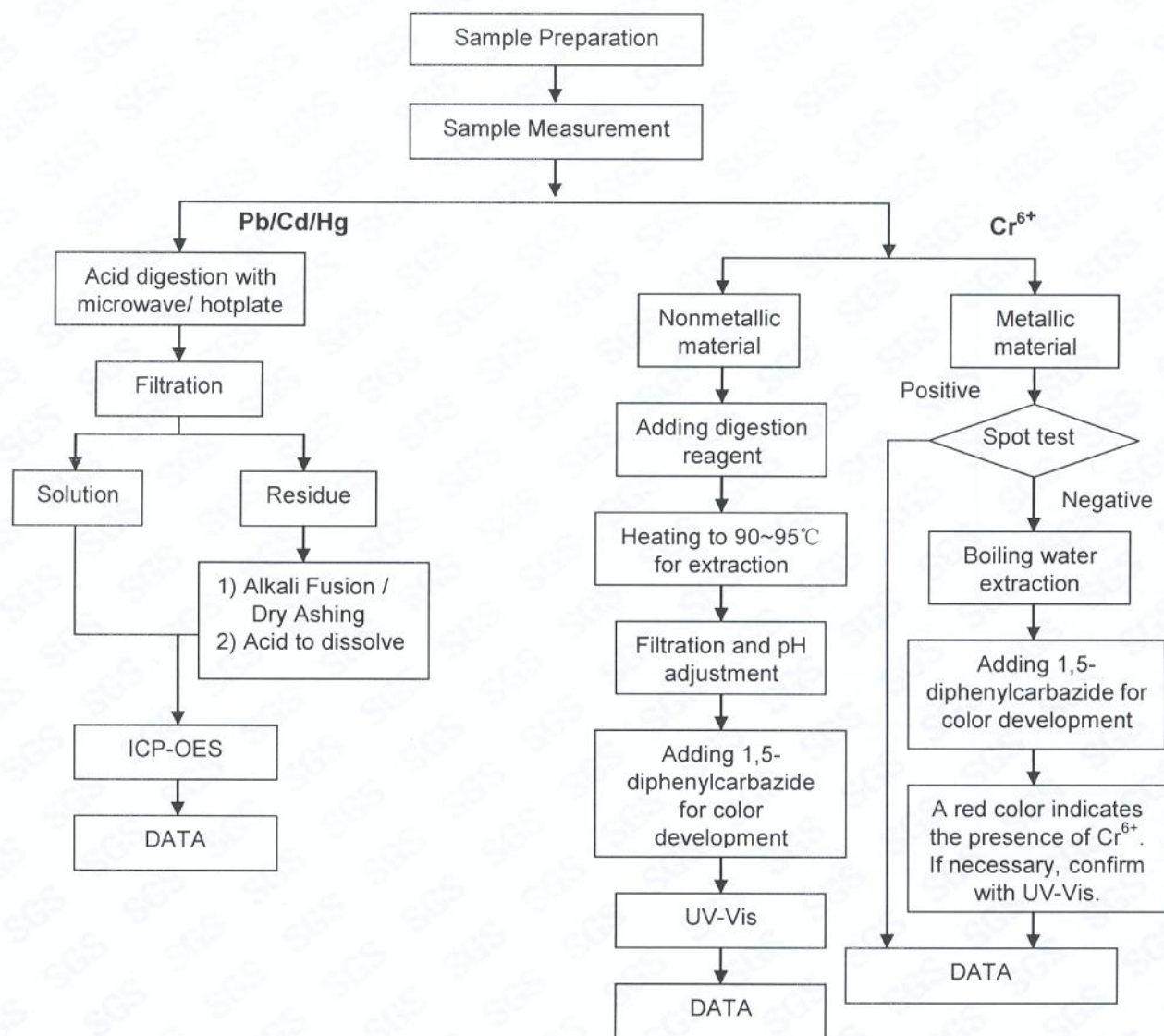
SHML 354602

Member of the SGS Group (SGS SA)

ATTACHMENTS

RoHS Testing Flow Chart

- 1) Name of the person who made testing: Jan Shi/Yoyo Wang/Allen Xiao
- 2) Name of the person in charge of testing: Jeff Zhang/George Xu
- 3) These samples were dissolved totally by pre-conditioning method according to below flow chart. (Cr⁶⁺ test method excluded)



Attention: To check the authenticity of testing inspection report & certificate, please contact us at telephone: (86-755)83071443, or email: CN.Doccheck@sgs.com

This document is issued by the Company subject to its General Conditions of Service printed overleaf, available on request or accessible at http://www.sgs.com/terms_and_conditions.htm and, for electronic format documents, subject to Terms and Conditions for Electronic Documents at www.sgs.com/terms_e-document.htm. Attention is drawn to the limitation of liability, indemnification and jurisdiction issues defined therein. Any holder of this document is advised that information contained hereon reflects the Company's findings at the time of its inspection only, and within the limits of Client's instructions, if any. The Company's sole responsibility is to its Client and this document does not exonerate parties to a transaction from exercising all their rights and obligations under the transaction documents. This document cannot be reproduced except in full, without prior written approval of the Company. Any unauthorized alteration, forgery or falsification of the content or appearance of this document is unlawful and offenders may be prosecuted to the fullest extent of the law. Unless otherwise stated, the results shown in this test report refer only to the sample(s) tested and such sample(s) are retained for 30 days only.



No.69, Block 1159, East Kang Qiao Road, Pudong District, Shanghai, China 201319 t(86-21)61196300 f(86-21)68183122/68183920 www.cn.sgs.com
 中国·上海·浦东康桥东路1159弄69号 邮编:201319 t(86-21)61196300 f(86-21)68183122/68183920 e sgs.china@sgs.com

SHML 354603

Member of the SGS Group (SGS SA)

Sample photo:



SGS authenticate the photo on original report only

*** End of Report ***

Attention: To check the authenticity of testing / inspection report & certificate, please contact us at telephone: (86-755)83071443, or email: CN.Doccheck@sgs.com

This document is issued by the Company subject to its General Conditions of Service printed overleaf, available on request or accessible at http://www.sgs.com/terms_and_conditions.htm and, for electronic format documents, subject to Terms and Conditions for Electronic Documents at www.sgs.com/terms_e-document.htm. Attention is drawn to the limitation of liability, indemnification and jurisdiction issues defined therein. Any holder of this document is advised that information contained hereon reflects the Company's findings at the time of its inspection only and within the limits of Client's instructions, if any. The Company's sole responsibility is to its Client and this document does not exonerate parties to a transaction from exercising all their rights and obligations under the transaction documents. This document cannot be reproduced except in full, without prior written approval of the Company. Any unauthorized alteration, forgery or falsification of the content or appearance of this document is unlawful and offenders may be prosecuted to the fullest extent of the law. Unless otherwise stated, the results shown in this test report refer only to the sample(s) tested and such sample(s) are retained for 30 days only.



No.69, Block 1159, East Kang Qiao Road, Pudong District, Shanghai, China 201319 t(86-21)61196300 f(86-21)68183122/68183920 www.cn.sgs.com
中国·上海·浦东康桥东路1159弄69号 201319 t(86-21)61196300 f(86-21)68183122/68183920 e sgs.china@sgs.com

SHML 354541

Member of the SGS Group (SGS SA)